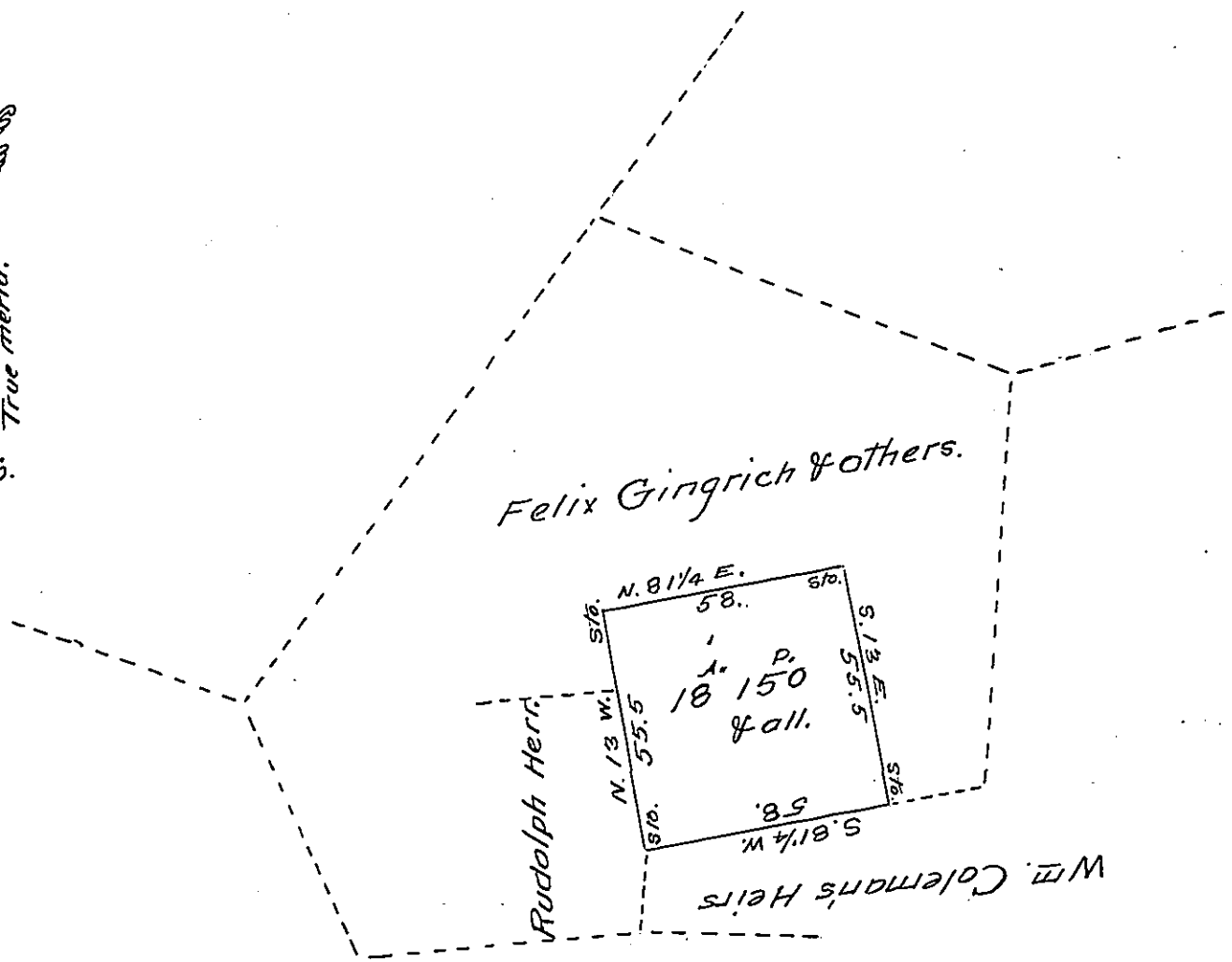


FORM No 1.

Magn. N 4° 20' W.
S. True Merid.



Draft of a tract of land situate in Londonderry township, Lebanon County, containing Eighteen acres one hundred and fifty perches and allowance of six per cent for Roads &c. Surveyed by Samuel Hoffer Esq. and by me examined this 23rd day of June A. D. 1870 and found to be correct. It being a part of a larger tract of 116 acres and allowance, originally surveyed in pursuance of a warrant dated the 29th day of May A. D. 1755 granted to George Gottlip.

Henry C. Grittinger

C.S.

To Hon. J. M. Campbell }
Surveyor Genl. of Penna. }

IN TESTIMONY that the above is a copy of the original remaining on file in the Department of Internal Affairs of Pennsylvania, made conformably to an Act of Assembly approved the 16th day of February, 1833, I have hereunto set my Hand and caused the Seal of said Department to be affixed at Harrisburg, this twenty seventh day of March 1907.

Isaac R. Brown
Secretary of Internal Affairs.